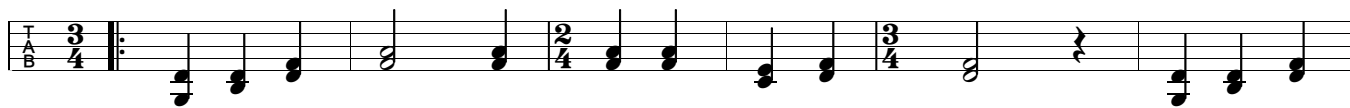


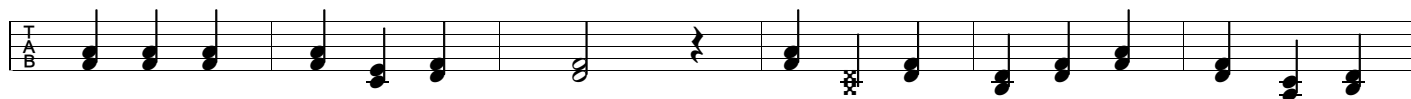
# Hansl im Saustall

## Zweifacher aus dem Ries

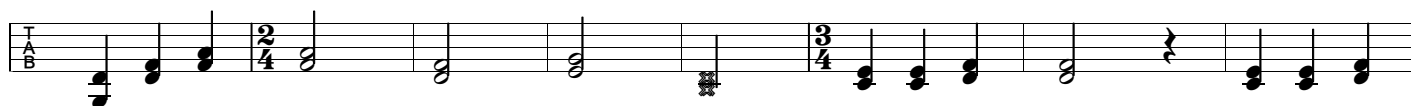
Griffschrift 3-Reiher



A a a A a a A a A a A a a A a a  
 Han-sl im Sau - stall, Gre-tl auf dem Mist. Han-sl schreit  
 Han-sl isch nar - risch, Gre-tl isch net gscheid. Han-sl schreit



A a a A a a A a a A a a A a a A a a  
 al - le-weil, "Gre-tl, wo bischt?" Di - ri-dom, di - ri-dom, lass doch dia  
 al - le-weil, "Gre-tl, bisch g'scheit?" Di - ri-dom, "



A a a A a A a B b B b A a a A a a A a a  
 Fra-ge-rei, di - ri, di - ri, di - ri - do - mei, di - ri-dom,



A a a A a †  
 di - ri - do - mei.



B b b B b b B b B b B b b B b b



B b b B b b B b b B b b B b b B b b B b b



B b B b C c C c B b b B b b B b b B b b B b †